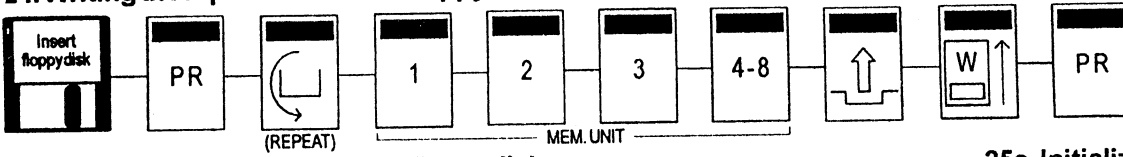
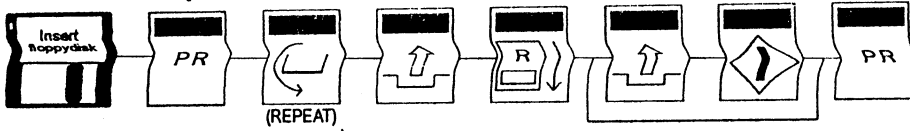


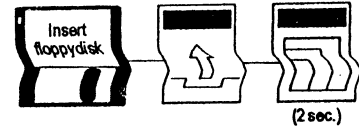
24. Writing the repeat data on the floppydisk.



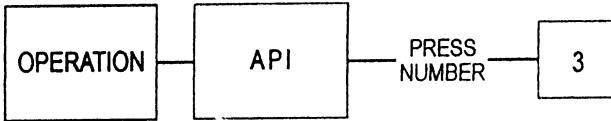
25. Read the repeat data from the floppydisk.



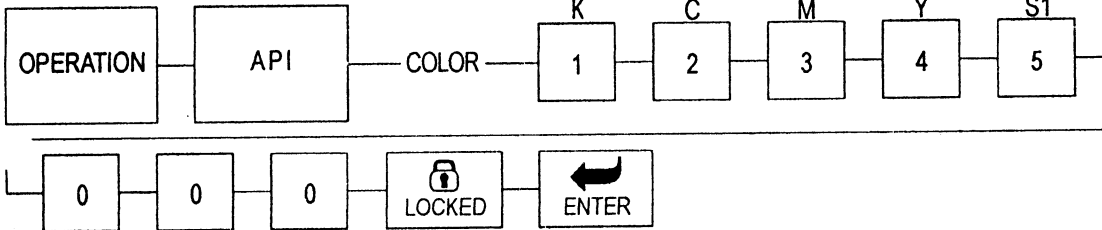
25a. Initializing the floppydisk.



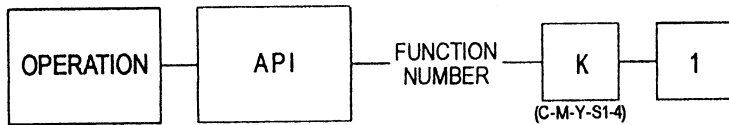
26. Setting the press no. (3).



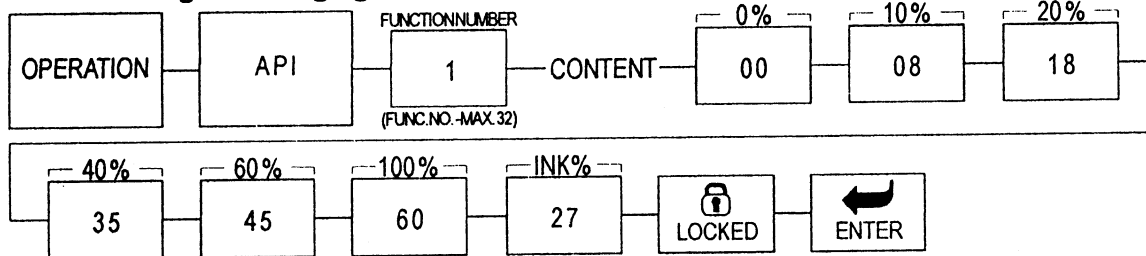
27. Colorselect / color sequence (Z, C, M, Y, S1).



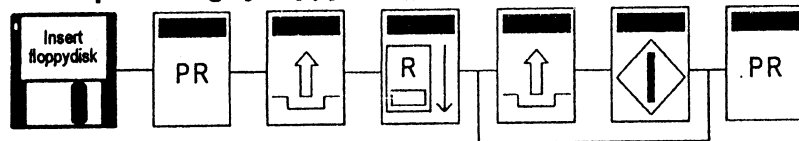
28. Setting the transferfunction no. (BL - 01).



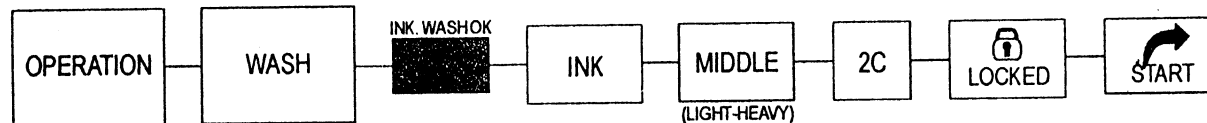
29. Confirming and changing the transferfunction (BL - 01).



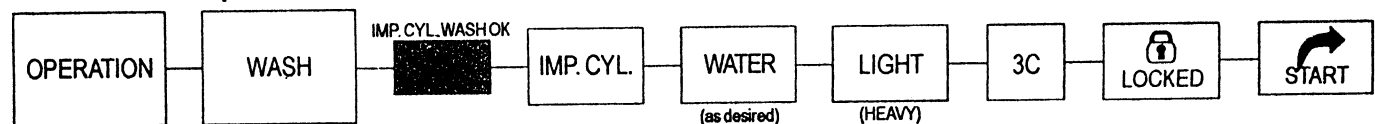
30. Ink presetting by floppydisk (platescanner data).



31. Automatic inkroller cleaning (unit 2).



32. Automatic impression cleaning (unit 3).



32a. Time adjustments cleaning device (ductor blade - on after 20 sec.).

