

Fast set-up, minimum waste

# Presetting Ink Keys via Network

*InkZone Perfect delivers economical, state-of-the-art ink key presetting technology for almost all offset presses. Thanks to InkZone, you can unleash the profitability that is hiding in your pressroom.*



## Small Gap, Big Opportunity

In many printing companies, the digital workflow stops with plate imaging. Preflight, layout, color corrections, proofs, plates and that's it. The press may have some digital controls, but in most shops, there is still a gap between the prepress workflow and the controls in the pressroom. Unfortunately, this means that the valuable capability to leverage prepress output data in order to preset ink keys on press remains unused. And because existing proprietary connections often come with high investment costs, there is little incentive to close

what seems to be a small gap in the flow of data. So, small to mid-sized companies will be throwing away the chance to achieve significant savings, better efficiency and a boost to quality.

This is the very reason Digital Information has developed InkZone. InkZone is an intelligent, JDF-enabled concept for closing the prepress to press workflow gap. InkZone is independent of all press manufacturers. Thanks to dedicated interfaces, an unique method to make a network connection to most any press console – even on older offset presses – and a low price point, closing

the workflow gap is affordable for printing operations of all sizes.

## JDF-supported ink key presetting

InkZone is based on JDF technology and is fully compliant with global workflows and international standards. The DI-Plot software sends ink coverage values in the form of JDF files to InkZone Perfect for conversion to calibrated machine- and print-related values for presetting the ink keys and ductor rollers. The InkZone hardware components send this data via network and in the specific format required by the press console.

## Technical Specifications

### Preset Software: InkZone Perfect

Software package for accepting zone coverage values generated by DI-Plot in XML/JDF format. Allocation of all printing inks to the appropriate printing unit. Calibration of the zone percentage values in line with ink key openings and ductor roller positions on the press. Transmission of this data

to the press console using the InkZone hardware connections or existing network connections. Copying the print job from the press console for calibration and archiving of machine data. Local storage and administration of archived jobs.

#### PC Configuration:

##### System Requirements

- CPU Intel Core 2 Duo, 2.x GHz, 2 GB RAM, 80 GB hard disk, 10,000 RPM, 19-inch TFT monitor (touch screen recommended), USB, 2x RS 232 (series), 2 x Ethernet
- Operating system: Microsoft Windows XP Professional or Vista Business

#### InkZone Hardware Connections:

##### InkZone Card Delivery

- Use on press consoles with card slot (e.g. Heidelberg CPC, MAN Roland)
- InkZone Card for console connection
  - Converter for integration into the Ethernet network via TCP/IP.
  - IZ Perfect software package
  - 120/230 Volt power supply

##### InkZone Strip Delivery

- Use on press consoles with magnetic strip readers (e.g. Komori)
- InkZone Strip, control unit for console connection
  - Converter for integration into the Ethernet network via TCP/IP.
  - IZ Perfect software package
  - 120/230 Volt power supply

##### InkZone Tape Delivery

- Use on press consoles with tape drives (e.g. Planeta)
- InkZone Tape, control unit for console connection
  - RS232 port
  - IZ Perfect software package

##### InkZone Wire Delivery

- Use on press consoles with cable connection (e.g. Heidelberg CP2000)
- InkZone Wire, control unit for console connection

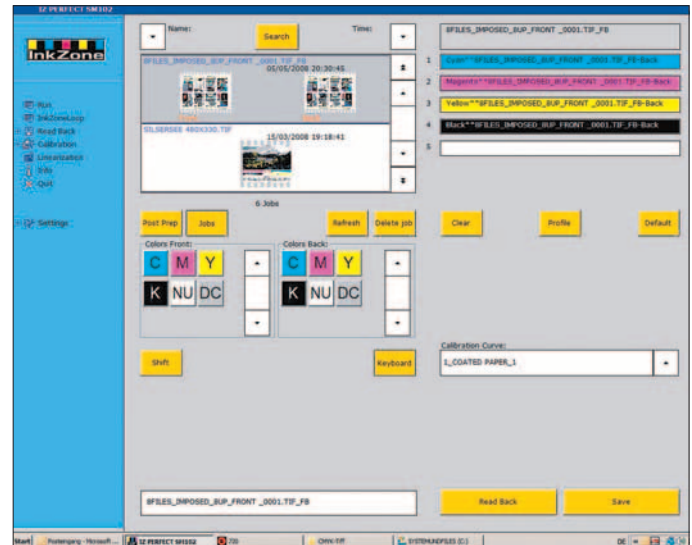
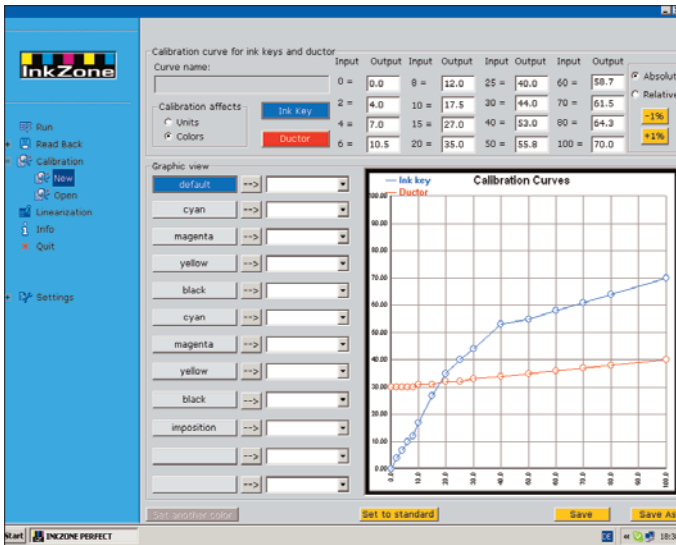
- RS232 port
- Cable set, switch box if required
- IZ Perfect software package

##### InkZone eFloppy Delivery

- Use on press consoles with floppy drive connection (e.g. KBA Rapida)
- InkZone eFloppy, control unit for console connection
  - Converter for integration into the Ethernet network via TCP/IP
  - IZ Perfect software package
  - 120/230 Volt power supply

For presetting the ink keys using InkZone, a DI-Plot license will be required. This software license is not ordinarily included in the InkZone system delivery.

# Presetting Ink Keys via Network



*InkZone Perfect: automatic adjustment of the linearization curves to specific printing conditions*

*Drag & drop: straightforward operating with mouse or touch screen*

## Greater efficiency, higher quality, fast ROI

With InkZone, Digital Information offers an interface between prepress and press that's equally powerful and economical. First, the solution provides networked ink key presetting, so color start-up is accomplished in a fraction of the previous time, bringing a clear increase in productivity. What's more, InkZone generates a database of your settings, allowing corrections and continuous improvement in results over time. This makes InkZone a component that's indispensable on the road to a standardized printing process. Consider the following: As you use InkZone Perfect, it compares the computed preset data with the corrected values during each press run. By reading back the values measured throughout the print run, the calibration curve for a given set of printing conditions can be continuously corrected and will gradually approach an optimum. When it comes to repeat orders, that means a further boost to the speed of set-up sequences, significant savings in paper, and a permanently stable, high-quality printing process.

An investment in extending your workflow to the pressroom with InkZone from Digital Information is worthwhile. From the hundreds of printers using InkZone worldwide, experience shows the ROI horizon to be only a few months away.

## A Connection to Every Press

Using the appropriate hardware components, ink key presetting with InkZone can be realized on almost all offset presses. The IZ Card, IZ Strip, IZ Tape, IZ eFloppy and IZ Wire connections support press consoles/offset presses from the following manufacturers:

Heidelberg CPC, Heidelberg CP2000, MAN Roland, KBA, Planeta, Komori, Ryobi, Sakurai, Mitsubishi, Akiyama, Adast, Caber, Eltromat, EPG, Goss, Harris, Müller Martini, InkFlow, GMI, EPG, MDS Monigraf, Perretta, Rockwell, TGC Grafitel, Shinohara, and many more.

*InkZone comes with connections that are suitable for networked ink key presetting on almost every printing press.*

